

Online Material

Table S1. Sampled localities, geographical coordinates, sample size (N), observed haplotypes, sample code and GenBank accession number for *M. quadrifasciata*.

Locality/State	Coordinates	N	Haplotype	Sample code	GenBank accession No.
Arceburgo-MG	21°21'S; 46°56'W	1	H46	ACE01A	FJ975750
Alfredo Chaves-ES	20°38'S; 40°44'W	4	H27	ALF01	FJ975707
			H27	ALF03	FJ975708
			H27	ALF04	FJ975709
			H27	ALF05	FJ975710
Barbacena-MG	21°12'S; 43°42'W	4	H1	BAR01	FJ975655
			H1	BAR02	FJ975620
			H1	BAR03	FJ975621
			H1	BAR04	FJ975622
Brejo-SE	10°22'S; 36°28'W	1	H38	SER27	FJ975719
Brumado-BA	14°12'S; 41°39'W	1	H2	BRU01	FJ975661
Caeté-MG	19°48'S; 43°32'W	6	H23	CAE01	FJ975662
			H23	CAE02	FJ975663
			H23	CAE03	FJ975664
			H24	CAE04	FJ975665
			H23	CAE05	FJ975666
			H24	CAE60	FJ975734
Caitité-BA	14°03'S; 42°29'W	4	H2	CAI01	FJ975623
			H2	CAI03	FJ975624
			H2	CAI04	FJ975625
			H2	CAI05	FJ975626
Campina Grande do Sul-PR	25°18'S; 49°03'W	2	H50	SC101	FJ975764
			H50	SC111	FJ975763
Coromandel-MG	18°41'S; 47°09'W	1	H25	COR01	FJ975667
Contendas do Sincorá-BA	13°45'S; 41°01'W	2	H9	COS01	FJ975668
			H9	COS02	FJ975669
Cristiano Otoni-MG	20°51'S; 43°45'W	5	H1	COT01	FJ975670
			H1	COT02	FJ975671
			H26	COT03	FJ975672
			H1	COT04	FJ975673
			H1	COT05	FJ975674
Cunha-SP	23°04'S; 44°57'W	4	H9	CUN01	FJ975729
			H9	CUN02	FJ975730
			H41	CUN3	FJ975731
			H47	Cunha168	FJ975751
Curitiba-PR	25°25'S; 49°16'W	5	H48	CUR03B	FJ975752
			H4	CUR04A	FJ975753
			H34	CUR05A	FJ975754
			H3	CUR06	FJ975627
			H4	CUR07	FJ975628
Domingos Martins-ES	20°23'S; 41°01'W	4	H27	DOM01	FJ975732
			H27	DOM02	FJ975675
			H27	DOM03	FJ975676

			H27	E141	FJ975733
Diogo de Vasconcelos-MG	20°32'S; 43°44'W	1	H5	DVA02	FJ975629
Guarapari-ES	20°39'S; 40°30'W	5	H27	GUA01	FJ975711
			H27	GUA02	FJ975735
			H27	GUA03	FJ975736
			H27	GUA04	FJ975737
			H27	GUA05	FJ975738
Guimarânea-MG	18°50'S; 46°47'W	3	H6	GUI01	FJ975630
			H7	GUI02	FJ975631
			H6	GUI03	FJ975632
Içara-SC	28°42'S; 49°17'W	5	H28	ICA01	FJ975677
			H29	ICA02	FJ975678
			H29	ICA03	FJ975679
			H29	ICA04	FJ975680
			H29	ICA05	FJ975712
Itaberaba-BA	12°31'S; 40°18'W	2	H14	ITA02A	FJ975755
			H8	ITA03	FJ975633
Itaiópolis-SC	26°19'S; 49°56'W	5	H45	SC01a	FJ975749
			H44	SC121	FJ975745
			H34	SC131	FJ975746
			H45	SC141	FJ975747
			H34	SC161	FJ975748
Ituaçu-BA	13°48'S; 41°17'W	1	H9	ITU01	FJ975634
Jacobina-BA	11°10'S; 40°31'W	1	H36	JAC01	FJ975713
Janaúba-MG	15°48'S; 43°18'W	1	H49	JANAU82	FJ975756
Januária-MG	15°25'S; 44°19'W	7	H15	JAN01	FJ975681
			H14	JAN02	FJ975682
			H14	JAN03	FJ975683
			H15	JAN04	FJ975684
			H30	JAN05	FJ975685
			H14	JANU15	FJ975757
			H14	JANU77	FJ975758
Jequié-BA	13°51'S; 40°05'W	4	H9	JEQ01a	FJ975759
			H10	JEQ02	FJ975635
			H9	JEQ03	FJ975714
			H9	JEQ04	FJ975715
Jeremoabo-BA	10°04'S; 38°28'W	1	H38	JER01	FJ975718
Lafaiete Coutinho-BA	13°39'S; 40°12'W	1	H9	LAF01	FJ975686
Lajedo do Tabocal-BA	13°28'S; 40°13'	2	H8	LAJ01	FJ975687
			H14	LAJ02	FJ975688
Lapão-BA	11°22'S; 41°49'W	1	H14	LAP01A	FJ975760
Oliveira-MG	20°40'S; 44°48'W	2	H24	M1	FJ975739
			H24	M11	FJ975740
Manoel Vitorino-BA	14°08'S; 40°14'W	1	H9	MAN01	FJ975689
Materlândia-MG	18°24'S; 43°02'W	1	H11	MAT01	FJ975636
Miguel Pereira-RJ	22°27'S; 43°28'W	1	H13	MPE02	FJ975639
Nova Porteirinha-MG	15°45'S; 43°16'W	5	H14	NOP01	FJ975641
			H14	NOP02	FJ975642

			H15	NOP03	FJ975643
			H14	NOP04	FJ975644
			H15	NOP75	FJ975645
Nova Soure-BA	11°13'S; 38°29'W	1	H14	NSO01A	FJ975761
Ourolândia-BA	10°58'S; 41°04'W	3	H14	OUR01A	FJ975646
			H16	OUR03	FJ975647
			H17	OUR04	FJ975648
Paulo Afonso-BA	09°24'S; 38°12'W	1	H38	PAF01	FJ975717
Pedra Azul-MG	16°00'S; 41°17'W	1	H27	PAZ01	FJ975727
Pedra Branca-BA	12°51'S; 38°29'W	1	H14	PED01	FJ975690
Pilar do Sul-SP	23°48'S; 47°42'W	2	H9	PIL01	FJ975741
			H9	PIL02	FJ975742
Piranga-MG	20°36'S; 43°11'W	5	H5	PIR01	FJ975691
			H31	PIR02	FJ975692
			H5	PIR03	FJ975693
			H5	PIR04	FJ975694
			H32	PIR05	FJ975695
Porto Alegre-RS	30°01'S; 51°13'W	5	H33	POR01	FJ975696
			H34	POR02	FJ975697
			H29	POR03	FJ975698
			H29	POR04	FJ975699
			H34	POR05	FJ975700
Poté-MG	17°46'S; 41°54'W	2	H18	POT01A	FJ975649
			H19	POT02	FJ975650
Ressaquinha-MG	21°03'S; 43°42'W	4	H1	RES01	FJ975651
			H1	RES02	FJ975652
			H20	RES03	FJ975653
			H1	RES04	FJ975654
Rio Vermelho-MG	18°18'S; 43°00'W	6	H11	RIV01	FJ975637
			H35	RIV02	FJ975701
			H11	RIV03	FJ975702
			H11	RIV04	FJ975703
			H11	RIV05	FJ975704
			H11	RV19	FJ975705
Riacho dos Machados-MG	15°58'S; 43°02'W	1	H42	RMA01	FJ975743
Ribeirão Preto-SP	21°10'S; 47°48'W	1	H43	RPR01	FJ975744
São Cristovão-SE	11°01'S; 37°12'W	2	H37	SER35	FJ975716
			H38	SER45	FJ975720
São Francisco-MG	15°57'S; 44°48'W	1	H15	SFR32	FJ975762
São João Del Rey-MG	21°06'S; 44°13'W	3	H21	SJD02	FJ975656
			H22	SJD03	FJ975657
			H13	SJD04	FJ975658
Santa Inês-BA	13°17'S; 39°49'W	1	H14	STI01	FJ975659
Teresópolis-RJ	22°25'S; 42°59'W	1	H12	TER01A	FJ975638
Uruçuia-MG	16°04'S; 45°47'W	6	H15	URU01	FJ975721
			H39	URU02	FJ975722
			H39	URU03	FJ975723
			H39	URU04	FJ975725

			H39	URU05	FJ975724
			H39	URU39	FJ975726
Valença-RJ	22°14'S; 43°42'W	1	H13	VAL01	FJ975640
Vitória da Conquista-BA	14°51'S; 40°50'W	2	H9	VCO01	FJ975660
			H40	VCO02	FJ975728
Viçosa-MG	20°45'S; 42°52'W	1	H24	VIC01	FJ975706
Total		145			

Table S2. Coalescence parameters from MDIV, time of divergence (t) between clades for rate nucleotide substitution and confidence interval (CI) of t .

Rate substitution per year	θ	M	T	t (million of years)	CI for t
$\mu = 1.02 \times 10^{-5}$	12.46	0.02	0.81	0.493	0.292–0.840
$\mu = 1.28 \times 10^{-5}$				0.394	0.233–0.672

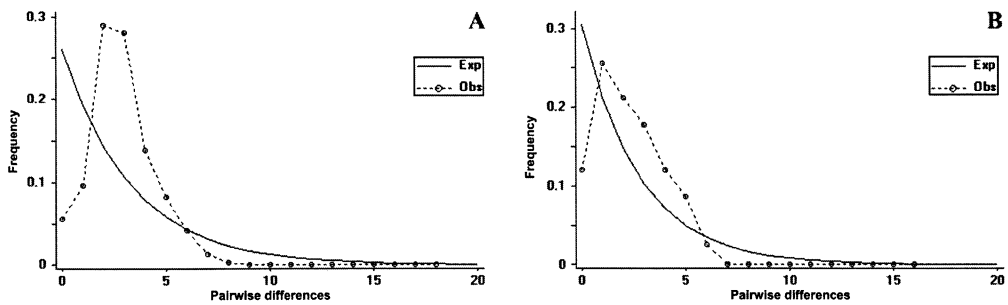


Figure S1. Diagrams showing the mismatch distribution in *M. quadrifasciata*. A: north clade; B: south clade. The expected distribution is a stable population of constant size.

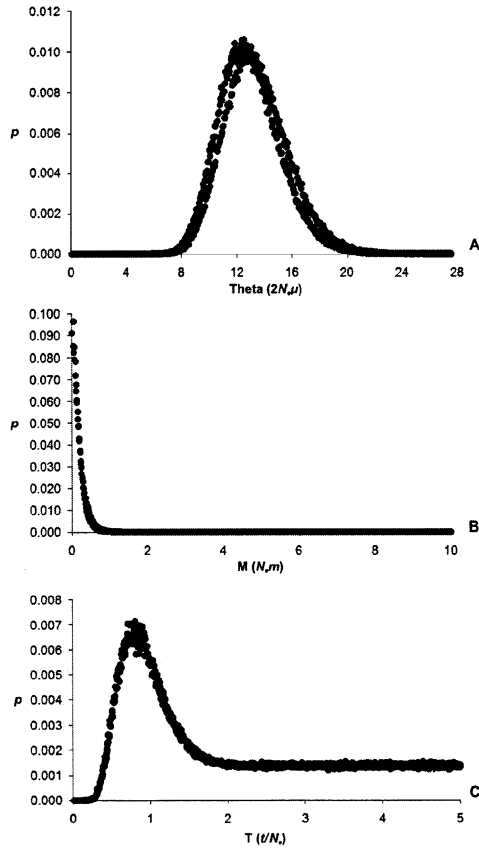


Figure S2. Distribution of probabilities of the coalescence parameters as inferred from MDIV. A: theta, B: M, C: T. p refers to a probability, μ is the nucleotide substitution rate per year, N_e is the historic effective size, m is the migration rate and t is the time of divergence.